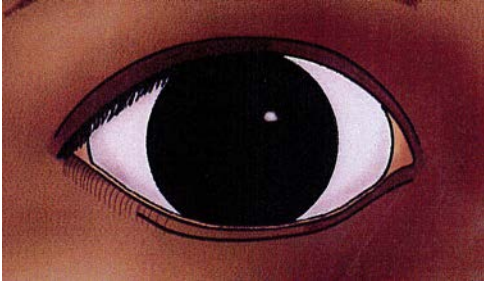


milpa



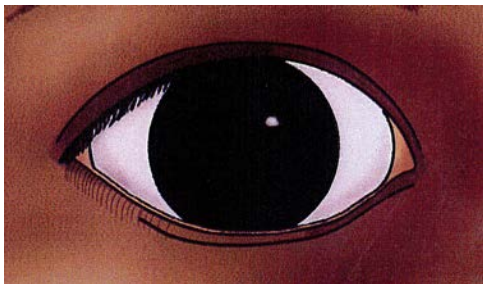
langa



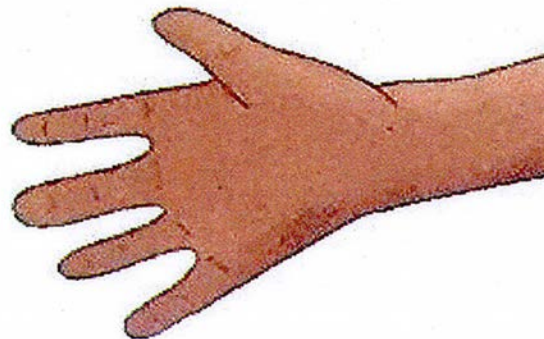
wirliya



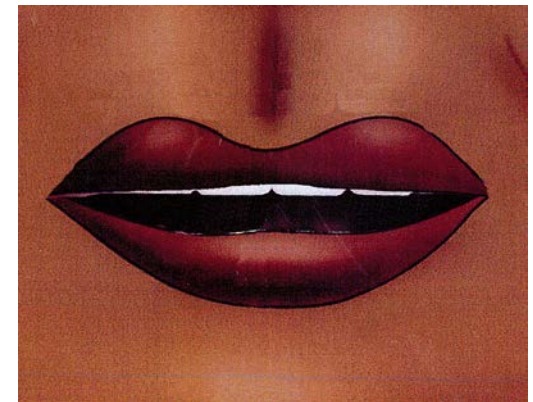
milpa



rdaka



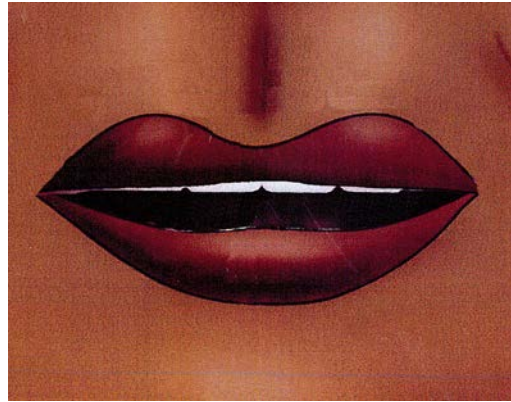
lirra



langa



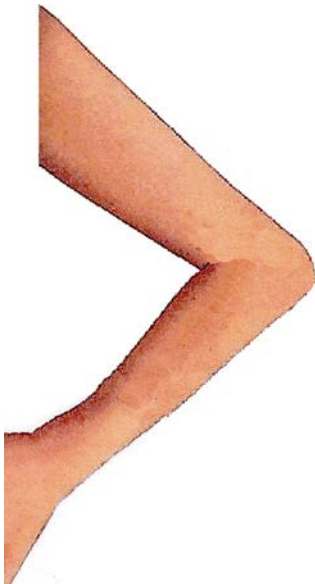
lirra



wirliya



waku



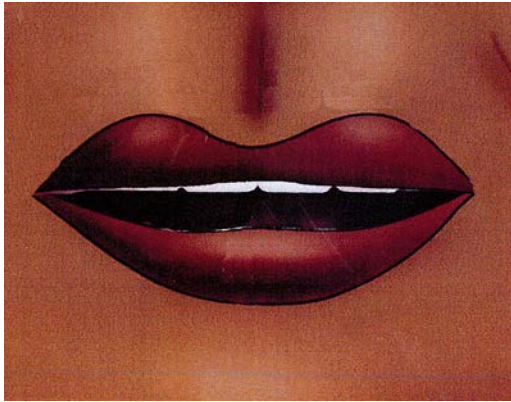
langa



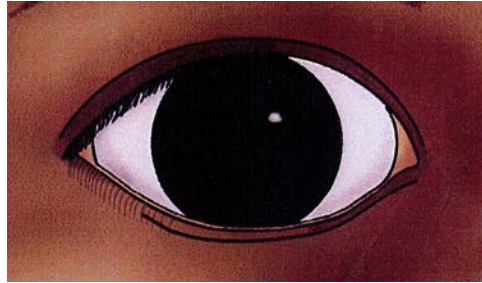
winirrpi



lirra



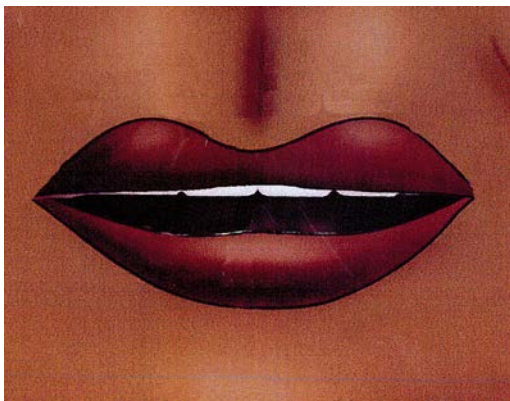
milpa



mirdi



lirra



waku



jalanypa



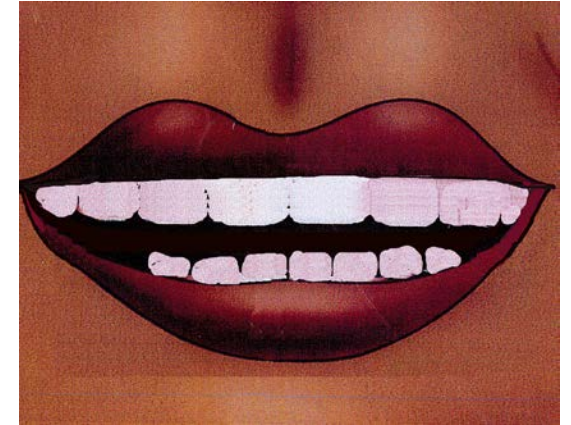
wirliya



wakurlu



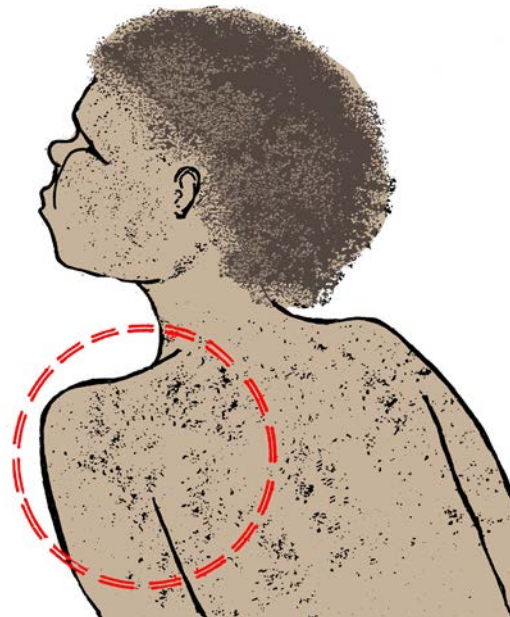
kartirdi



wirliya



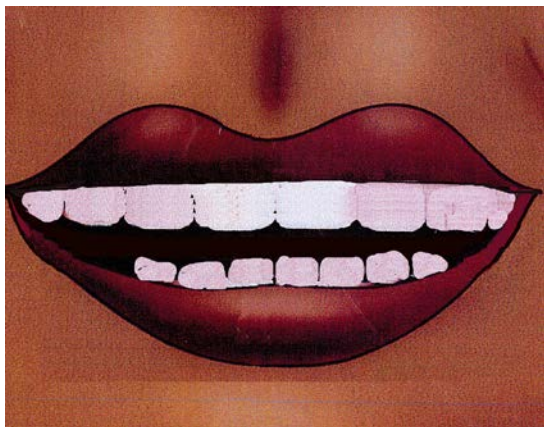
jimanta



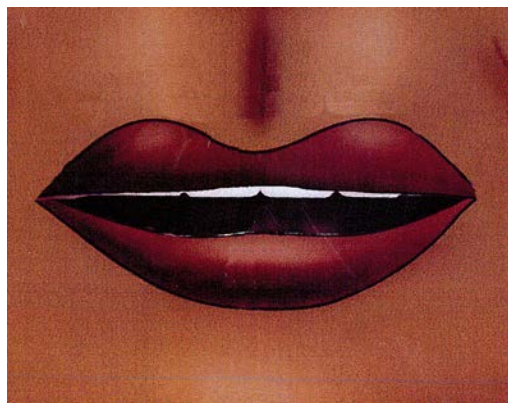
miyalu



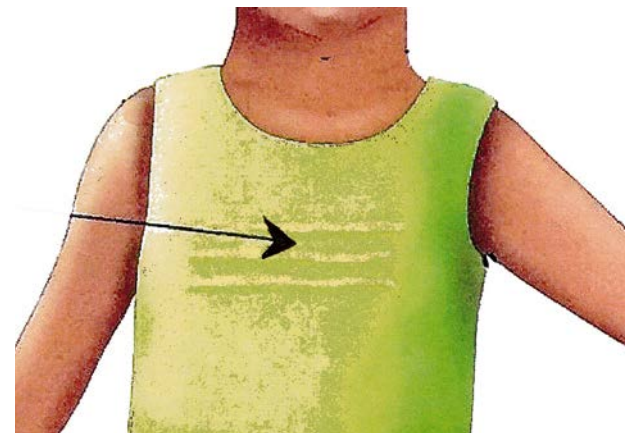
kartirdi



lirra



rduku-rduku



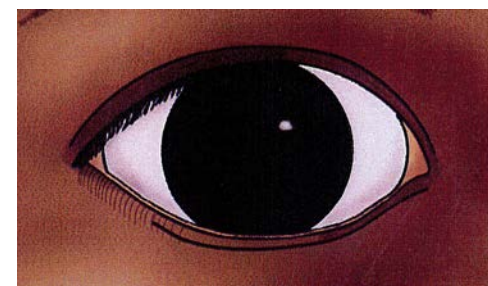
kartirdi



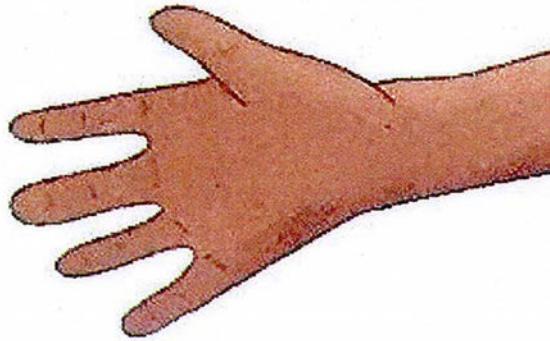
wakurlu



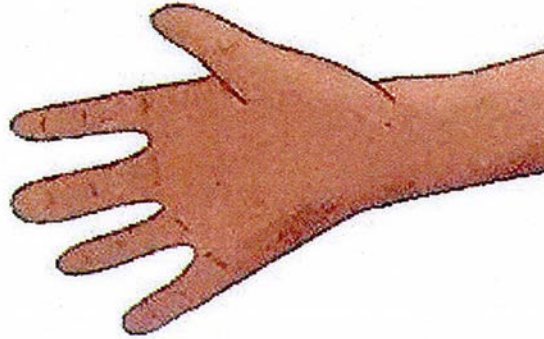
milpa



rdaka



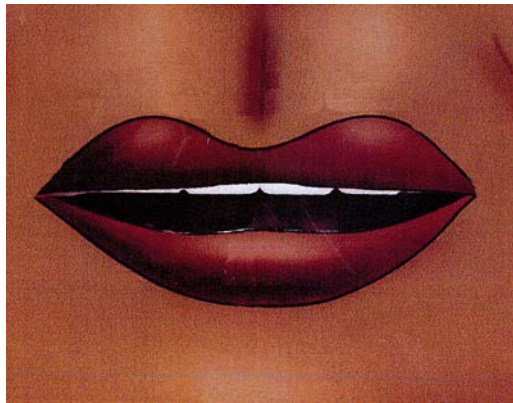
rdaka



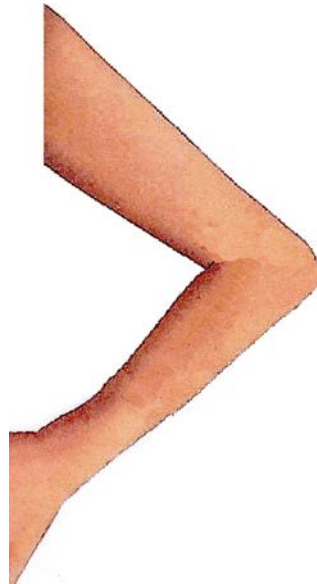
miyalu



lirra



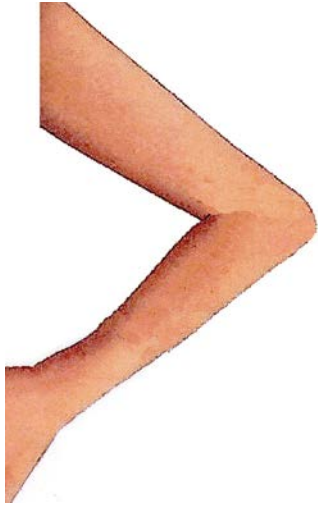
waku



jalanypa



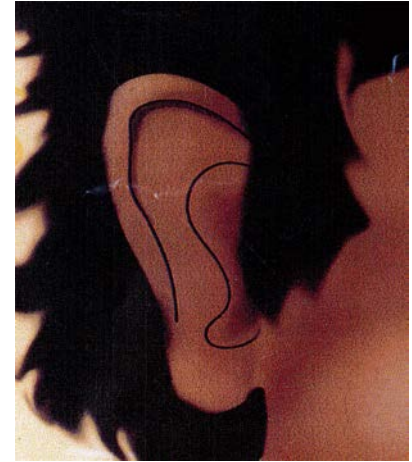
waku



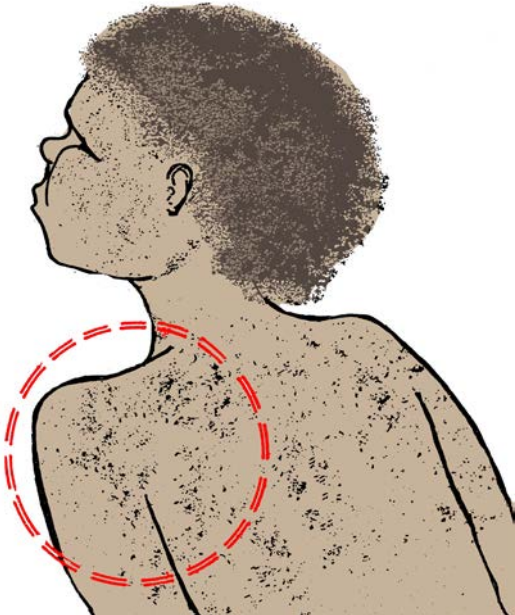
mirdi



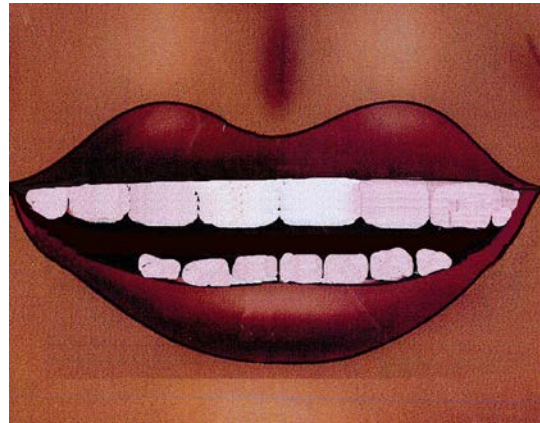
langa



jimanta



kartirdi



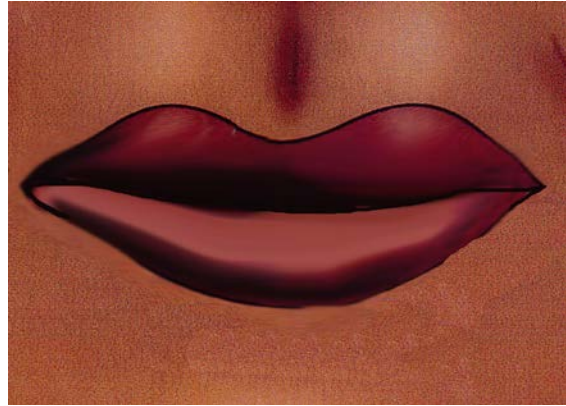
waku



milpimpiri



winirrpi



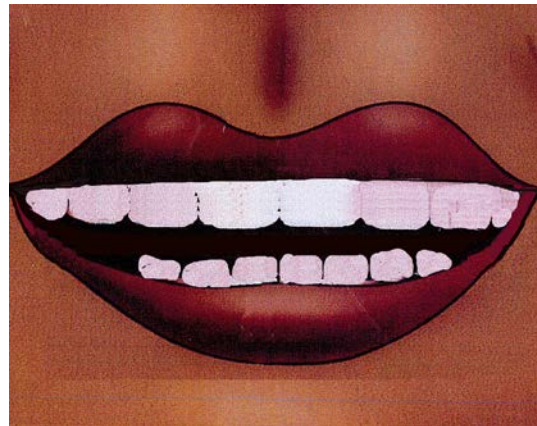
milpimpiri



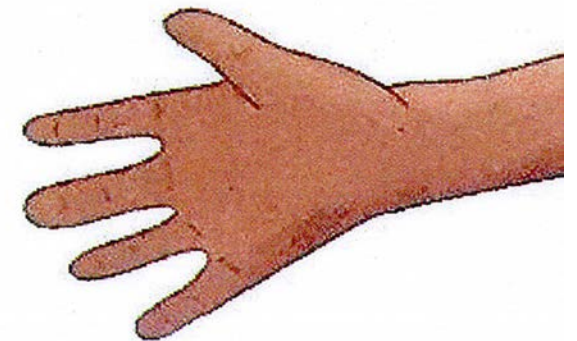
wirliya



kartirdi



rdaka



mirdi



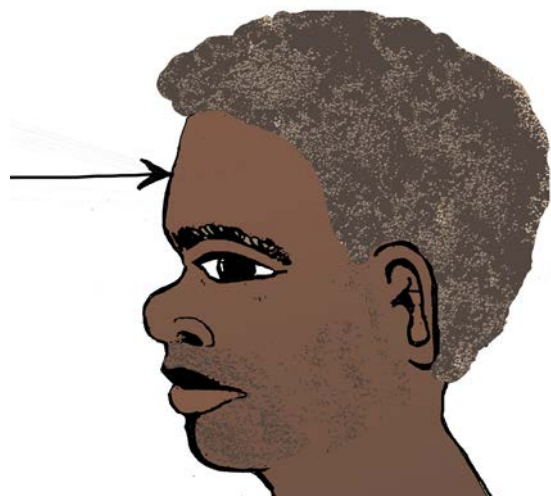
waku



wakurlu



ngalya



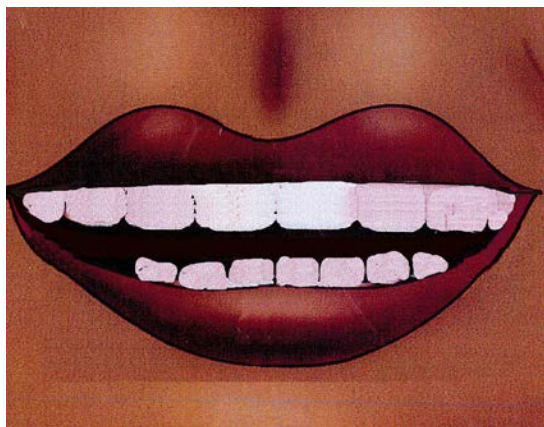
mirdi



rdaka



kartirdi



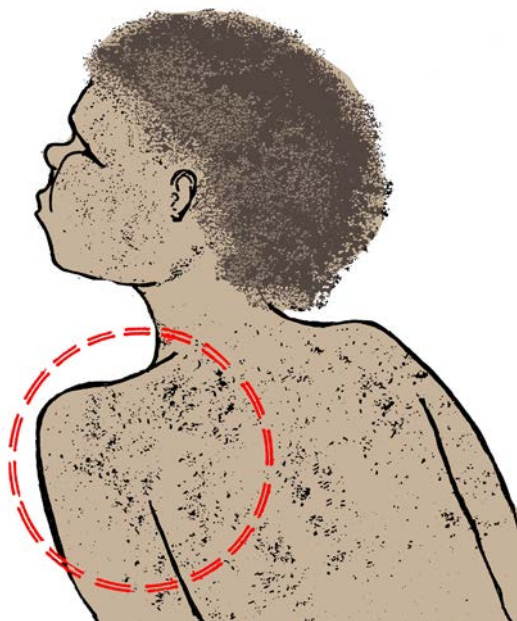
mirdi



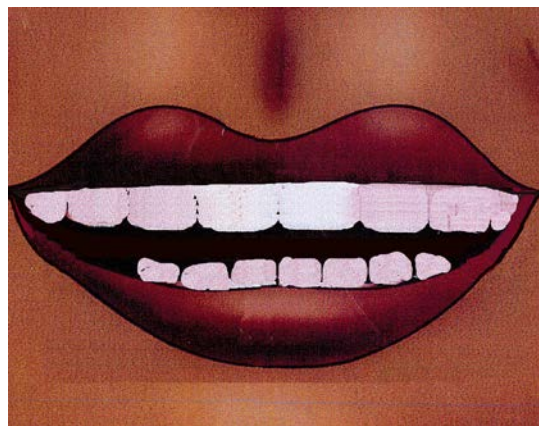
jalanypa



jimanta



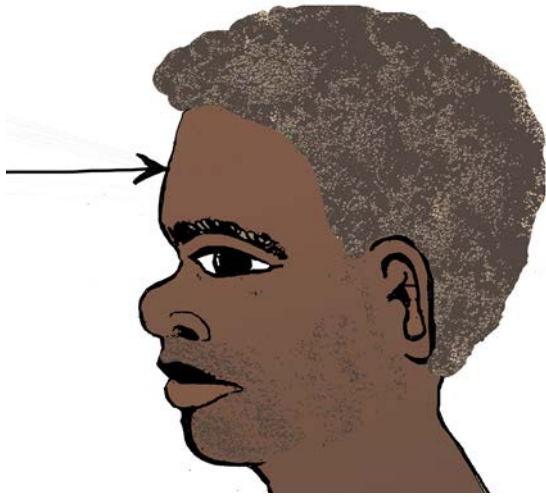
kartirdi



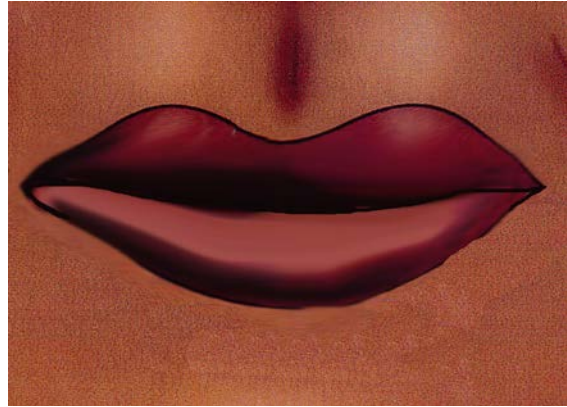
rduku-rduku



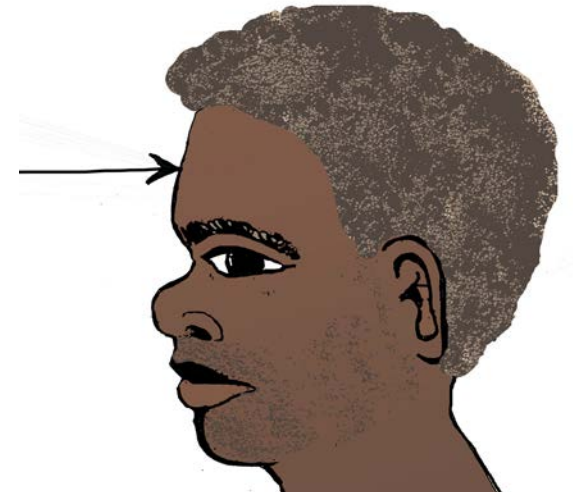
ngalya



winirрпи



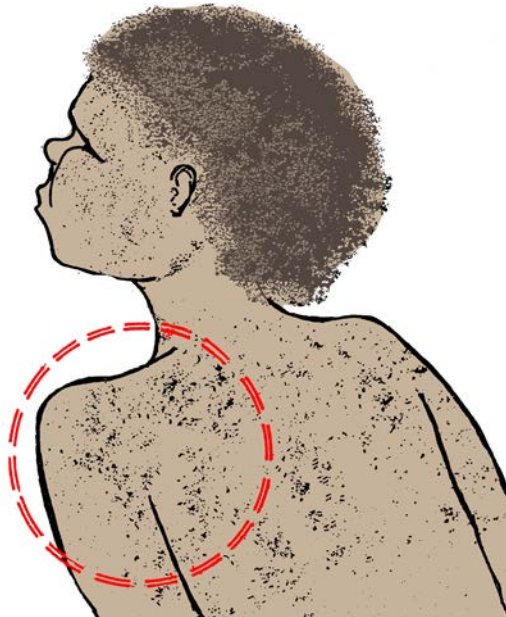
ngalya



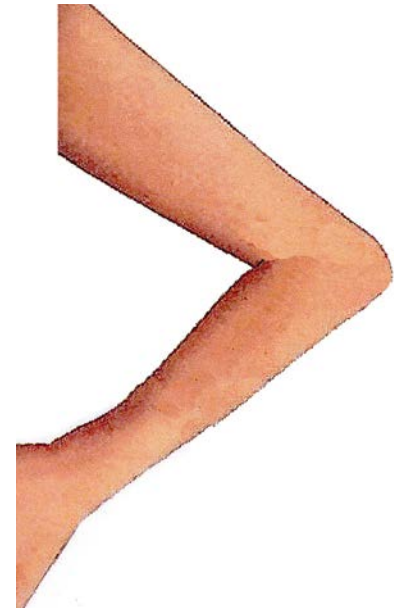
miyalu



jimanta



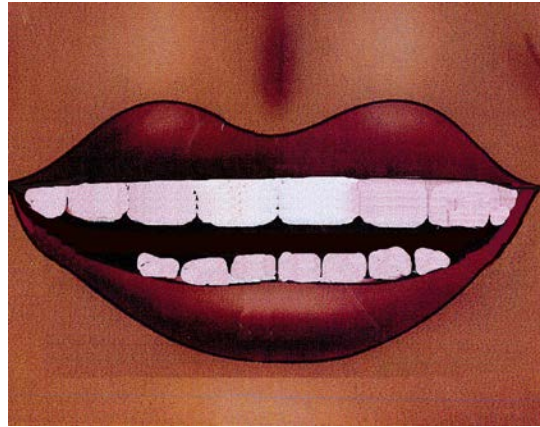
waku



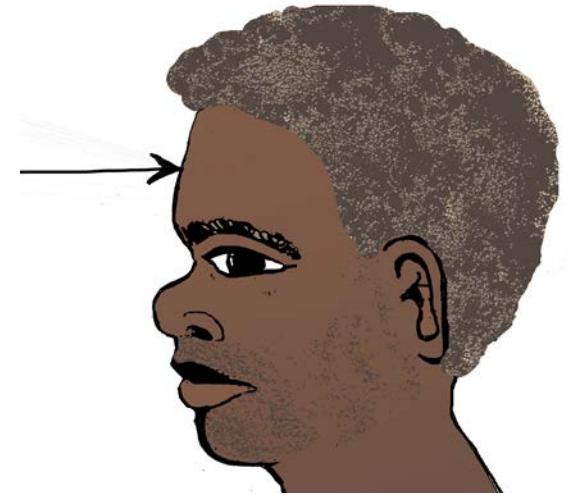
miyalu



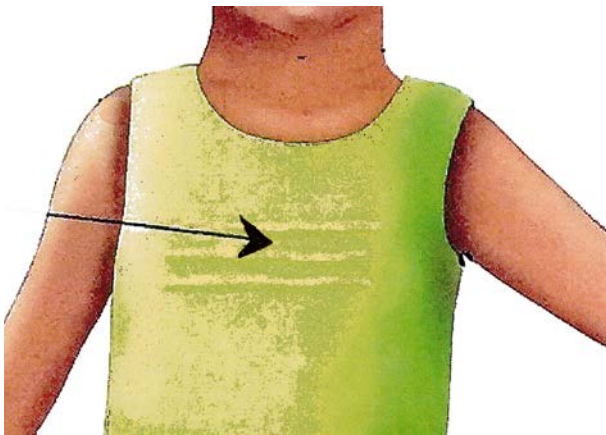
kartirdi



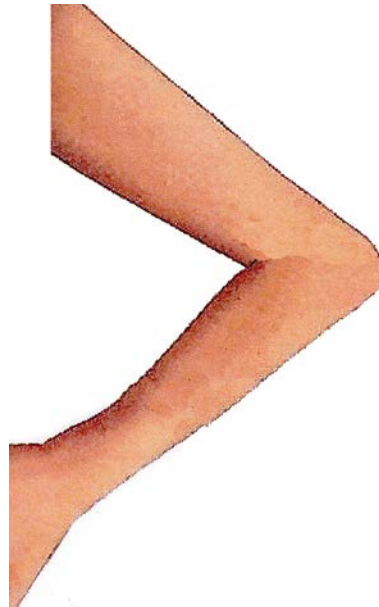
ngalya



rduku-rduku



waku



miyalu



langa



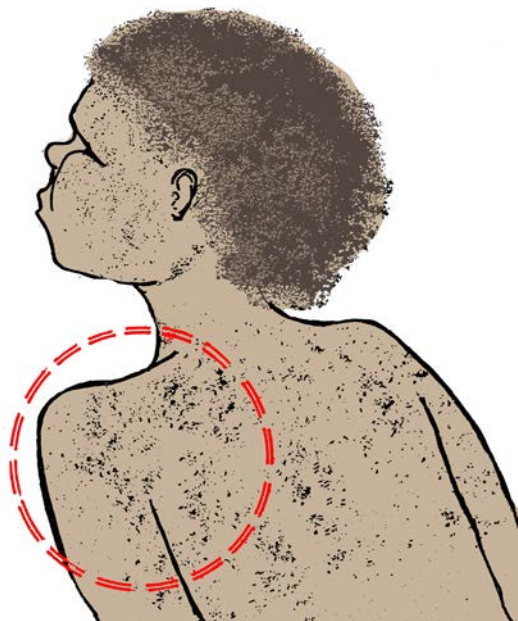
milpimpiri



wirliya



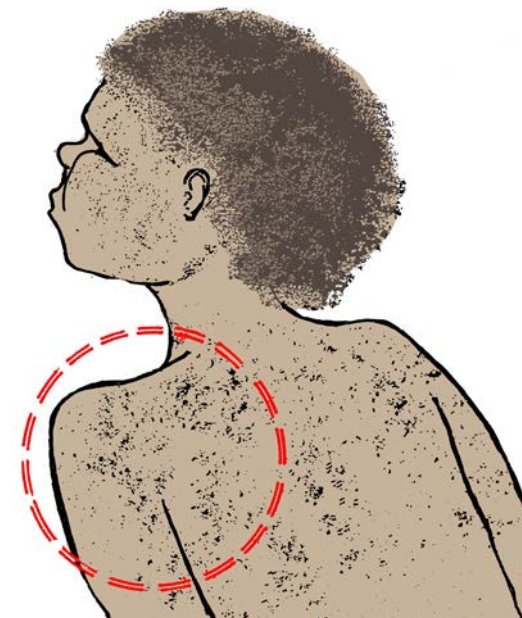
jimanta



jalanypa



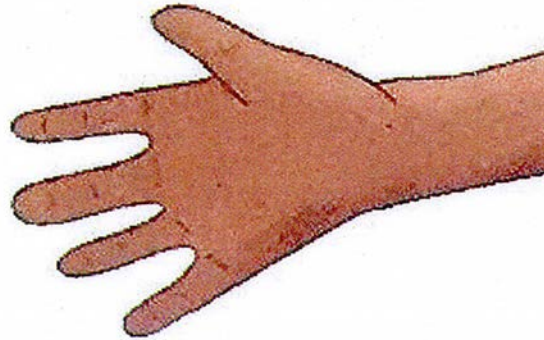
jimanta



wakurlu



rdaka



mirdi



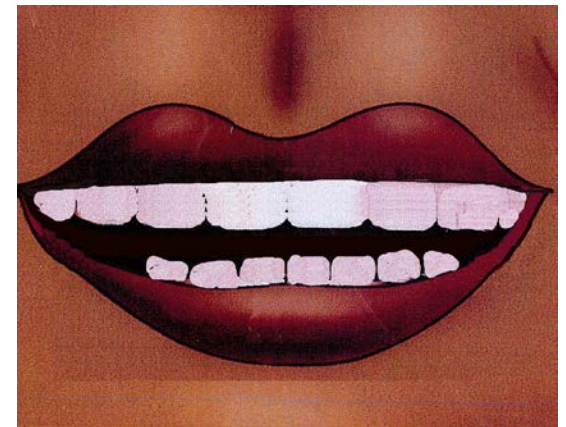
langa



wakurlu



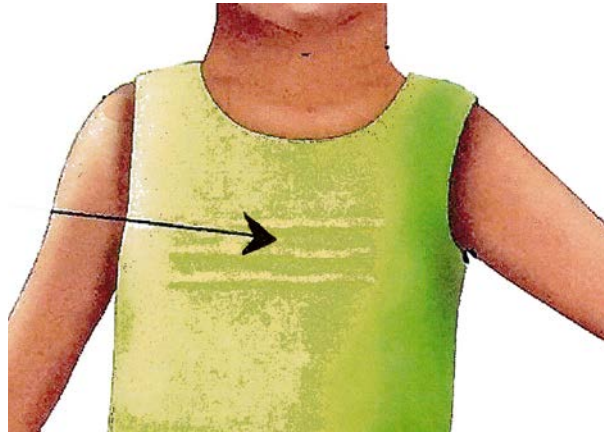
kartirdi



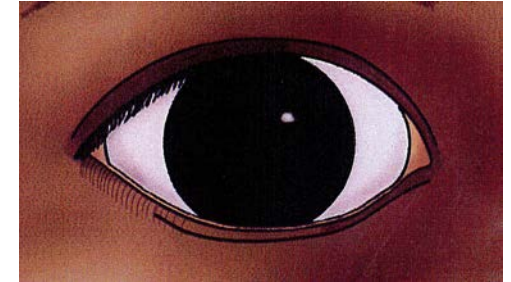
wirliya



rduku-rduku



milpa



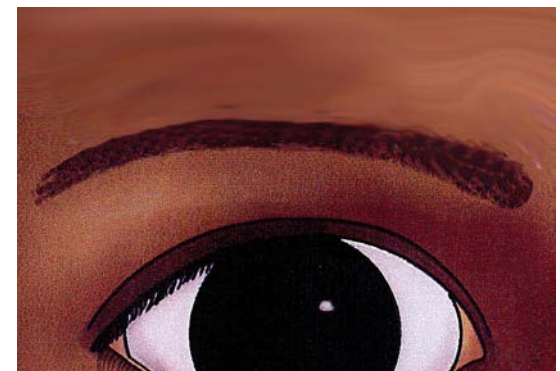
miyalu



ngalya



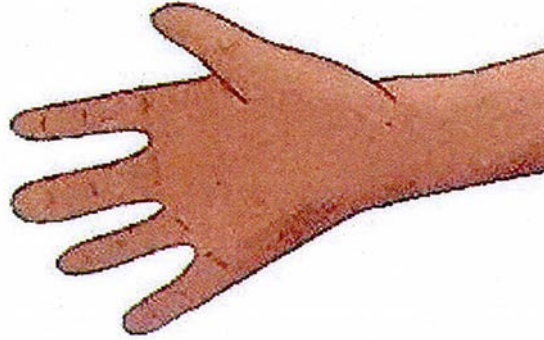
milpimpiri



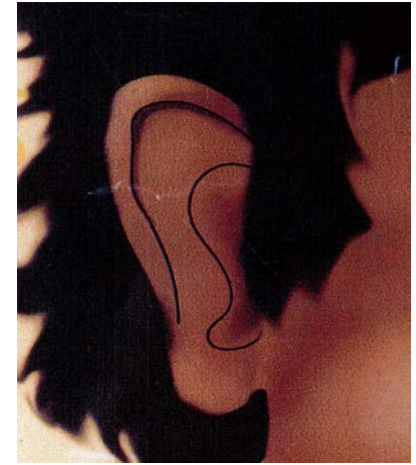
mirdi



rdaka



langa



mirdi



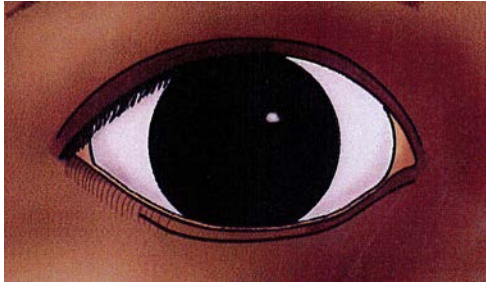
jalanypa



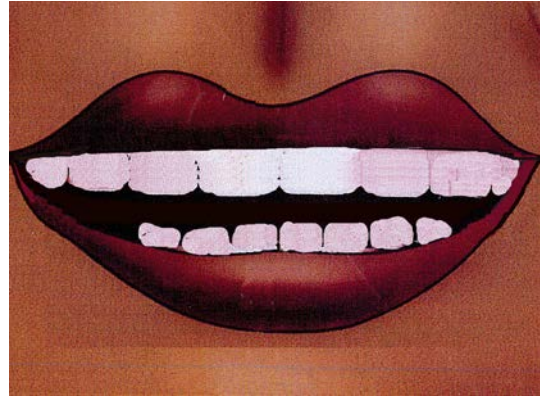
winirrpi



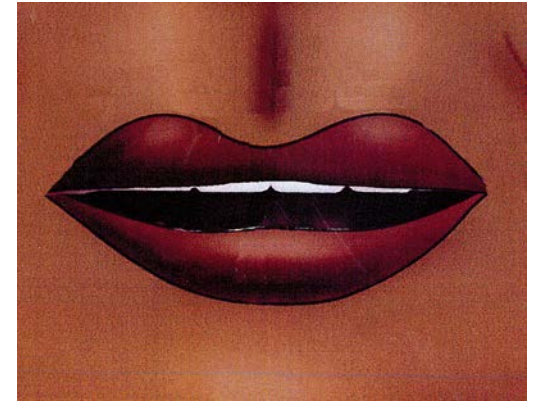
milpa



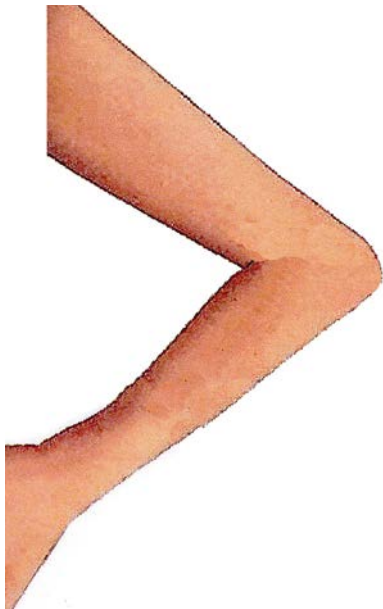
kartirdi



lirra



waku



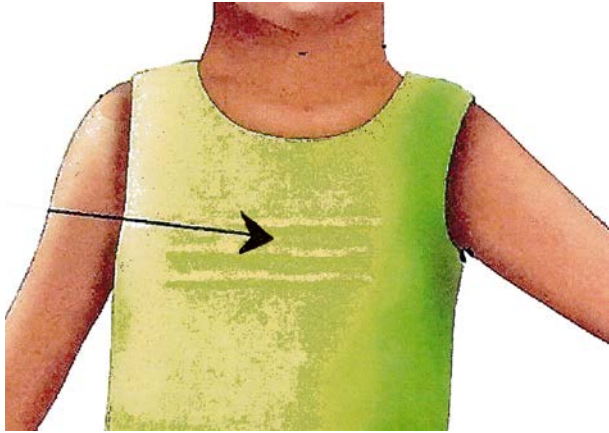
rduku-rduku



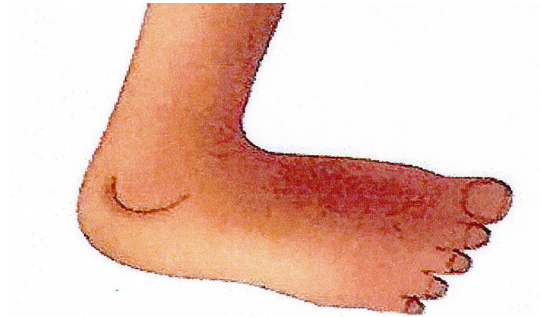
wirliya



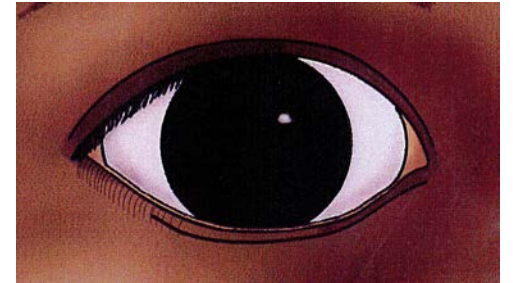
rduku-rduku



wirliya



milpa



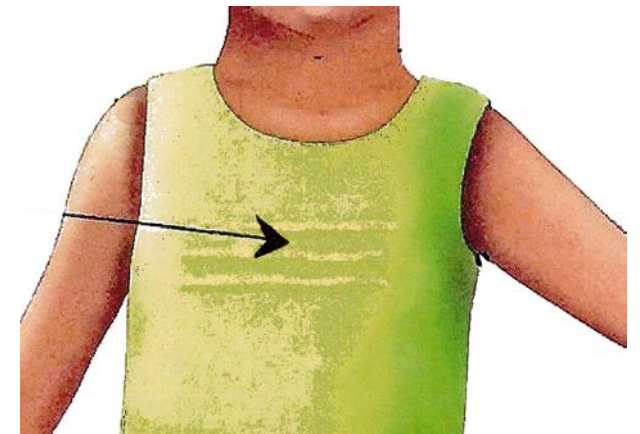
mirdi



ngalya



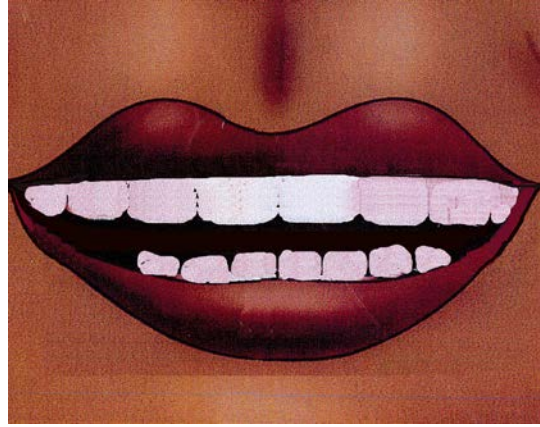
rduku-rduku



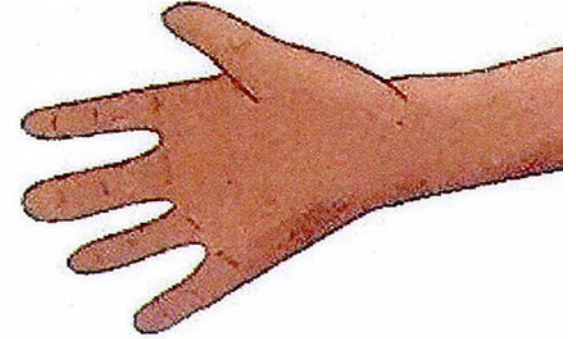
mirdi



kartirdi



rdaka



ngalya



langa



wakurlu



jalanypa



wirliya



milpimpiri



mirdi



jalanypa



miyalu



jalanypa



wirliya



milpimpiri



mirdi



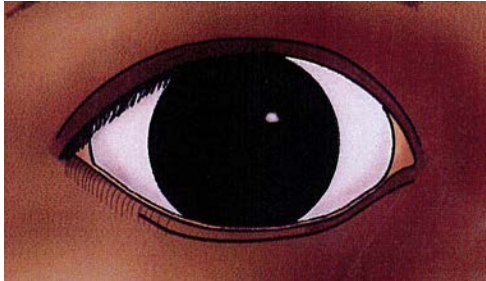
rduku-rduku



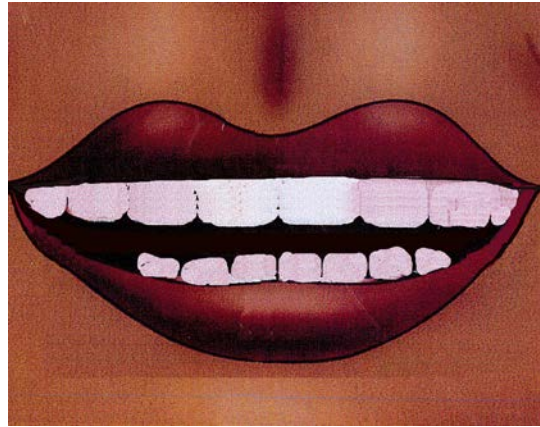
miyalu



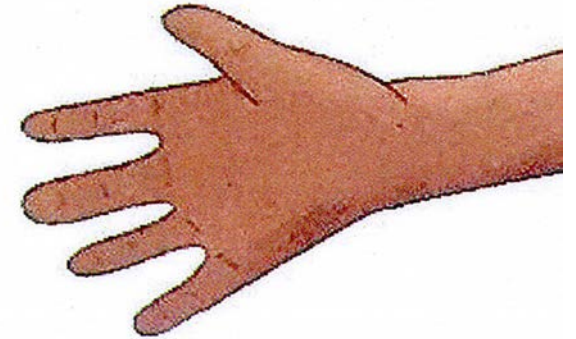
milpa



kartirdi



rdaka



ngalya



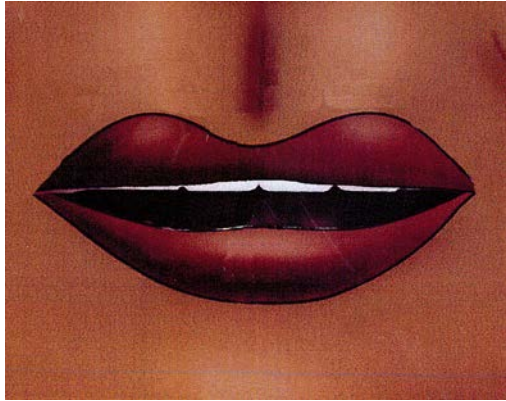
langa



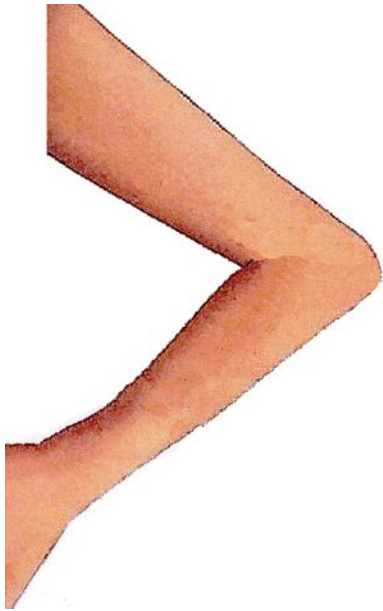
wakurlu



lirra



waku



winirрпи



jimanta

