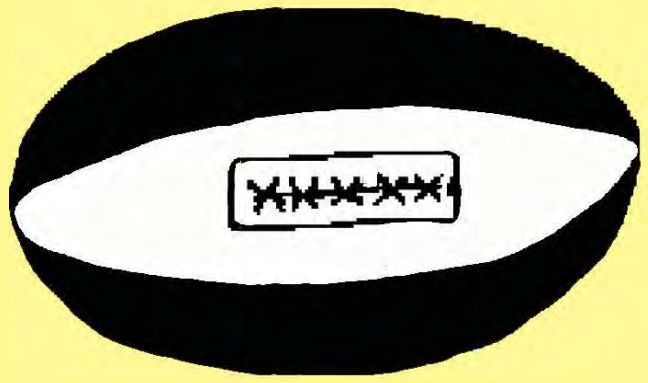


ja



japu-japu

ji



jintilyka

ju



jungunypa

ka

karnta



ki



kinki

ku



kuyu

la



langua

li



lirra

lu



lungkarda

ma



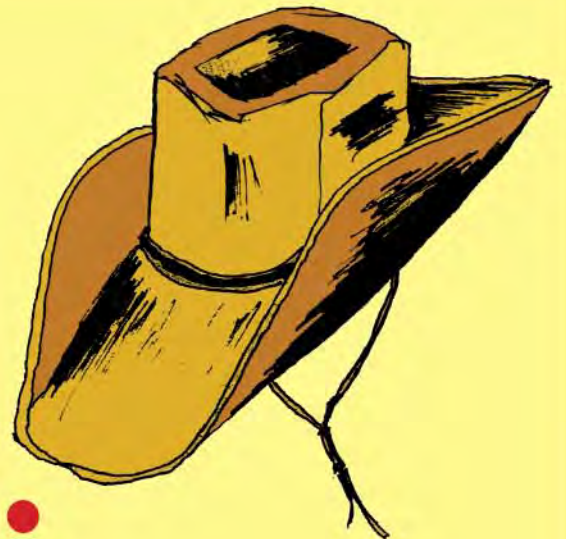
marlu

mi



mirnirri

mu



mukardi

na

nantuwu



ni

niji



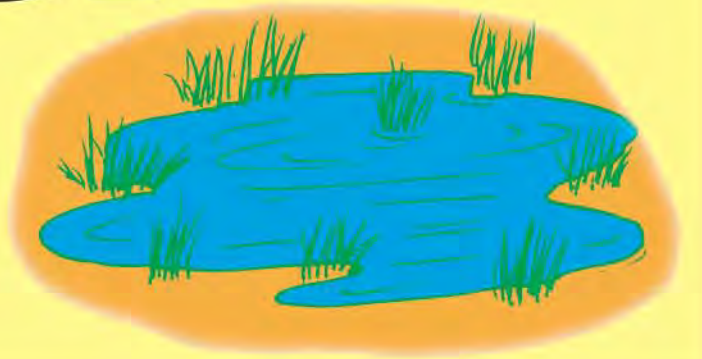
nu

nungarrayi



ngga

ngapa



nggi



ngipiri

nggu

ngurra



nyda

nyanyi



nyyi

nyinami



nyyu

nyurnu



pa



parraja

pi



pirli

pu



puluku

ra



rampaku

ri



rinpi-rinpi

ru



rurupa

rd da

rdaka



rdi

rdilyki



rd u

rduku-rduku



ta



taya

ti



tiyi

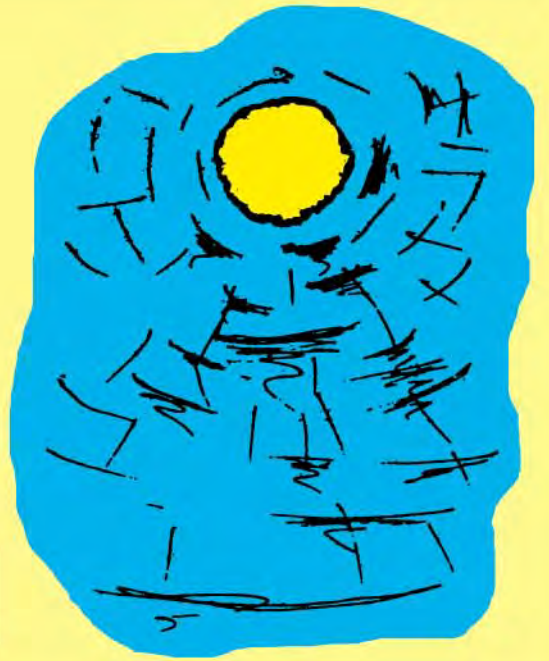
tu



turlkami

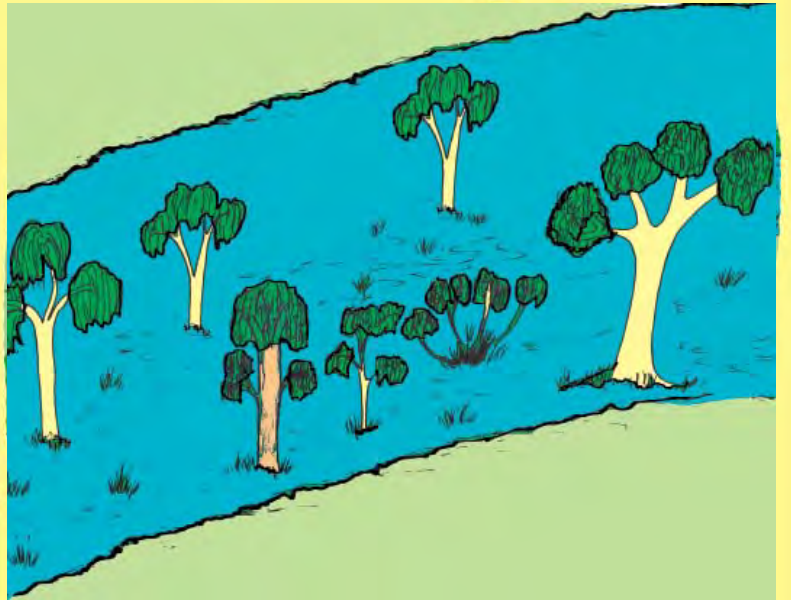
wā

wanta



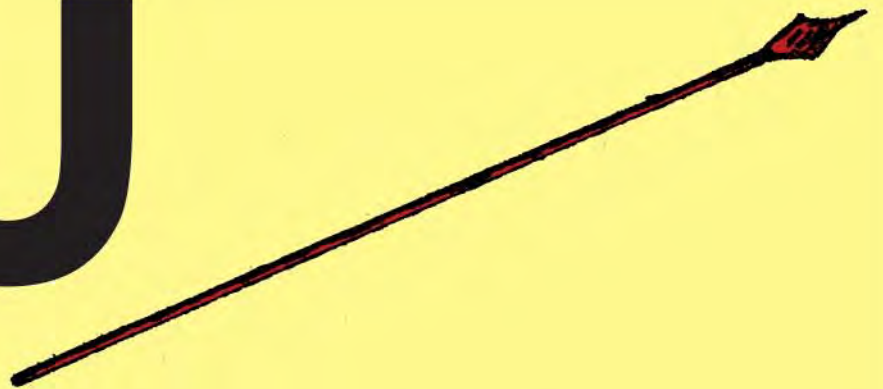
wī

wirri



wū

wurrumpuru



ya

yarla



yi

yimangi



yu

yujuku

