

chart 1

# jurɪpu

jinji-warnu

jipilyaku

kurrparu

warlawurru

luurnpa

yirrarnti

piin-piinpa

tiyi-tiyi

jiyiki

purla-purla

lapaji

juku-juku

nuwingki

ngapilkiri

chart 2

wardilyka

kakalyalya

kaarnka

kuurr-kuurpa

jintirr-jintirpa

## nyiyarningki-jarra wita-wita kuyu jurɪpuku

chart 1

ngirnti-wirarra

lirrirnpa

jintilyka

pinta-pinta

miji

nama

ngarlkirdi

yinarrki

pangkiji

mamu-mamu

kiwinyi

yimangi

chart 2

munikiyi

pirilyi-pirilyi

yirrinji

wayipi

yuljulju

yunkaranyi

karlangu-jarra-parnta

# jurlpu



luurnpa



ngatijirri



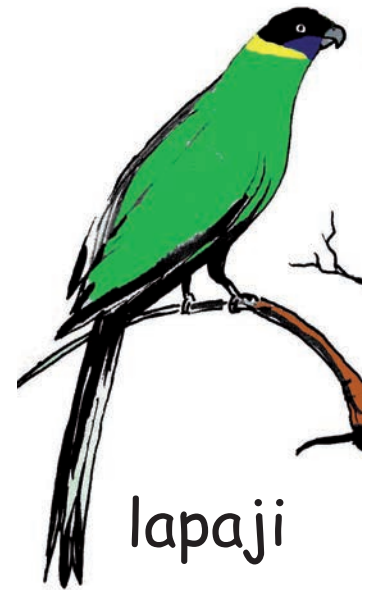
jinji-warnu



kakalyalya



tiyi-tiyi



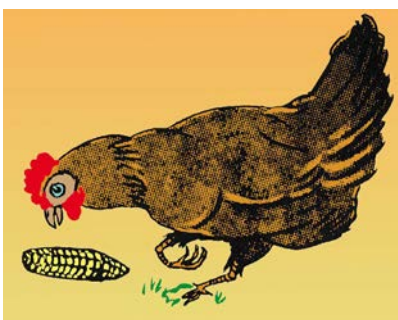
lapaji



ngapilkiri



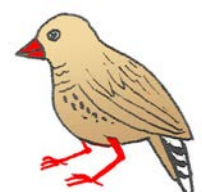
jipilyaku



juku-juku



yirrarnti



jiyiki



kaaruka

# jurlpu



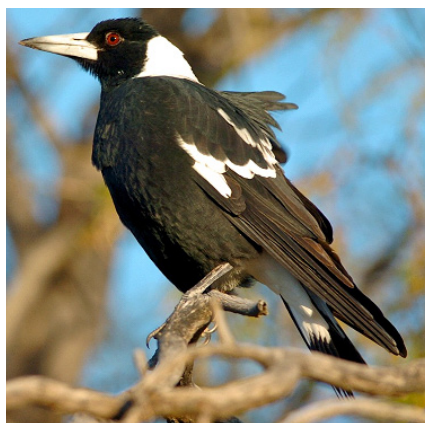
purla-purla



warlawurru



piin-piinpa



kurrparu



kuurr-kuurpa



wardilyka



jintirr-jintirpa



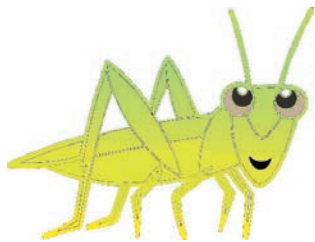
nuwingki



# nyiyarningki-jarra wita-wita kuja kalu warru wapami



nama



jintilyka



yimangi



pangkiji



munikiyi



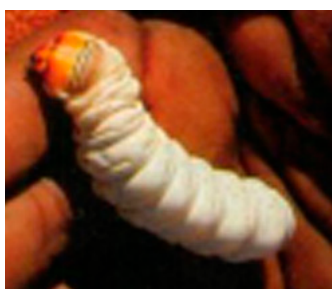
ngirnti-wirarra



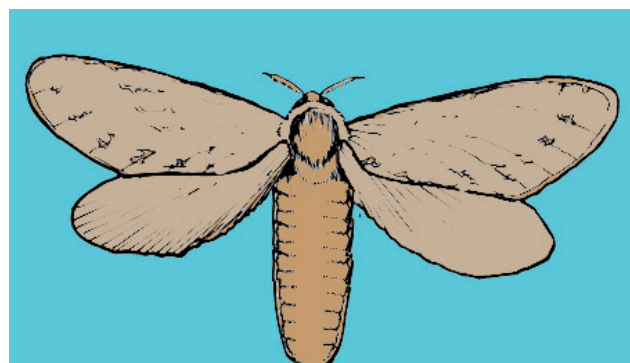
wayipi



pinta-pinta



ngarlkirdi

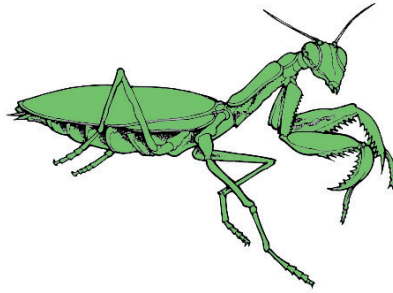


mamu-mamu

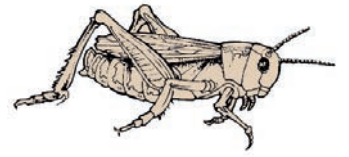
# nyiyarningki-jarra wita-wita kuyu jurlpuku



miji



yuljulju



lirrirnpa



yirrinji



pirilyi-pirilyi



yinarrki



kiwinyi

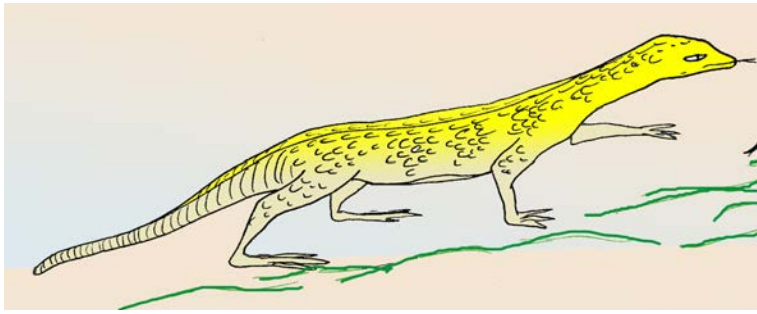


yunkaranyi

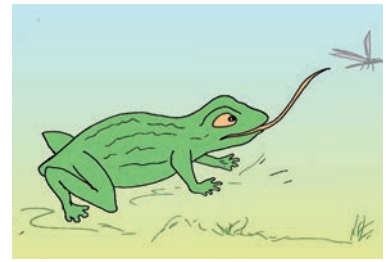


karlangu-jarra-  
parnta

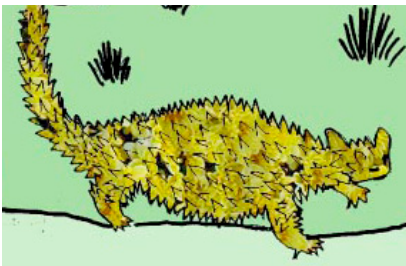
# yumurru-wangu



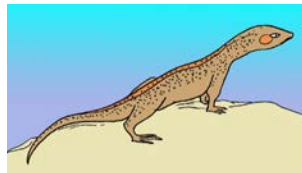
wardapi



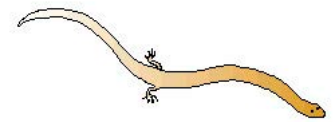
jarlji



mirnirri



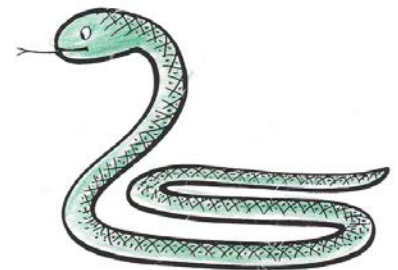
kilyawu



rinpi-rinpi



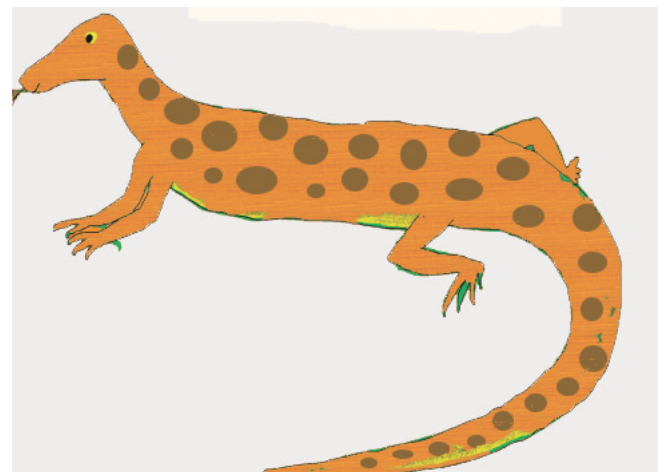
lungkarda



warna



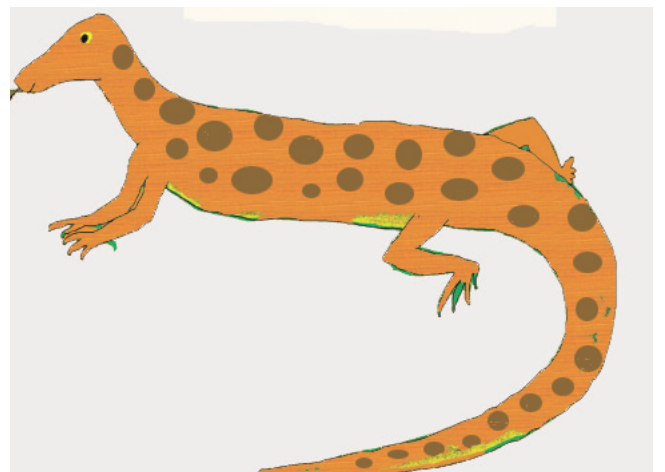
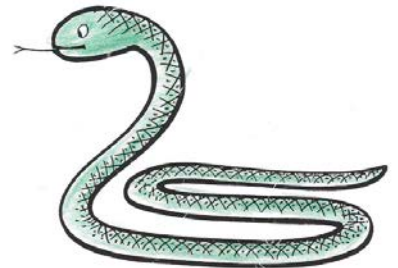
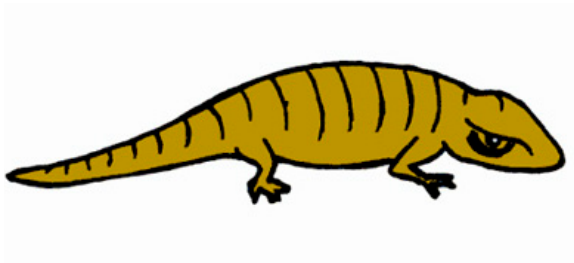
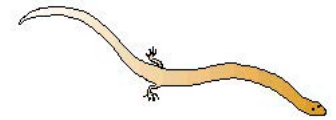
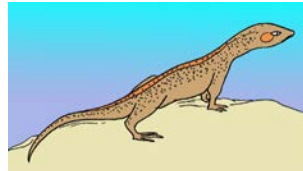
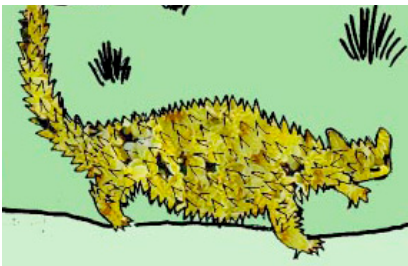
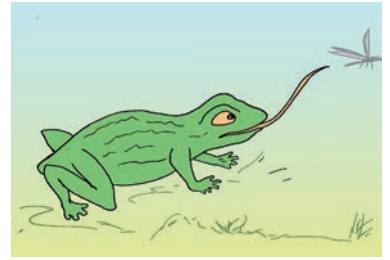
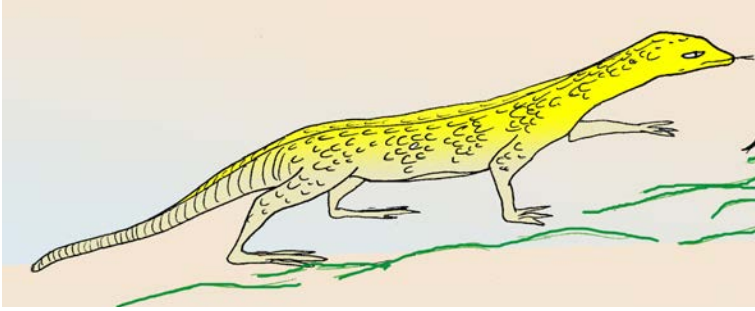
yurntukunyu



mulyurlinji



# yumurru-wangu



# yumurru-kurlu



marlu



kanyarla



wakulyarri



warnapari



mala



nini



# yumurru-kurlu



wampana



kutangi



yanjipiyi



pujarr-pujarrpa



nyalurti



jungunypa



ngati-kuturu



jajirdi



janganpa



# yumurru-kurlu

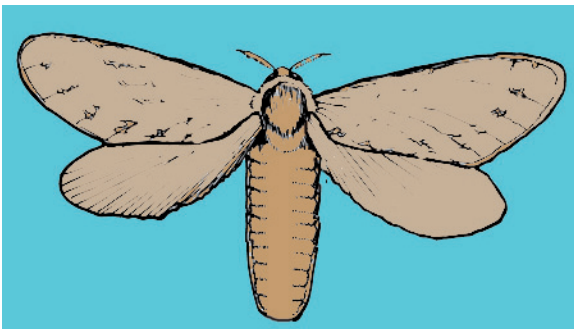
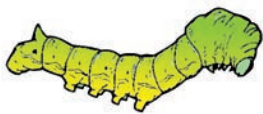
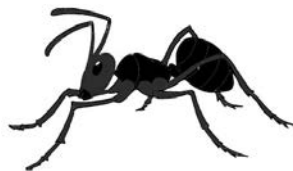




# yumurru-kurlu

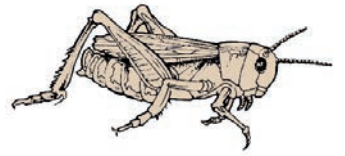
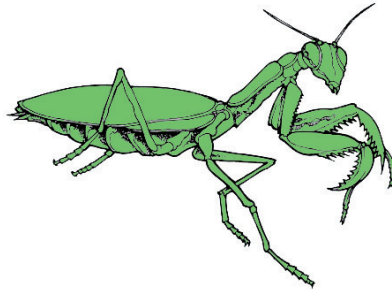


# nyiyarningki-jarra wita-wita kuja kalu warru wapami





# nyiyarningki-jarra wita-wita kuyu jurlpuku



# yumurru-wangu

wardapi

warna

mirnirri

mulyu-linji

lungkarda

rinpi-rinpi

yurnturrkunyuu

kilyawu

jarlji

# yumurru-kurlu

marlu

chart 2

jungunypa

kanyarla

wampana

janganpa

mala

kutangi

jajirdi

nini

yanjipiyi

wakulyarri

nyalurti

warnapari

pujarr-pujarrpa