

J j



jurɫpu



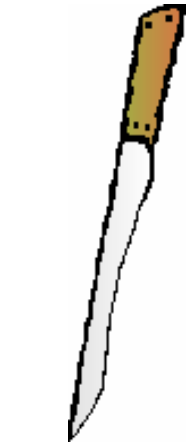
jintilyka



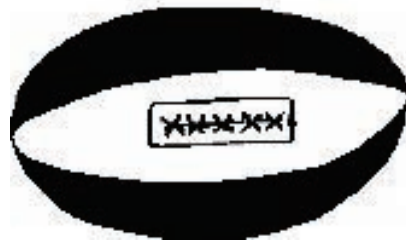
jipilyaku



jarɫji



junma

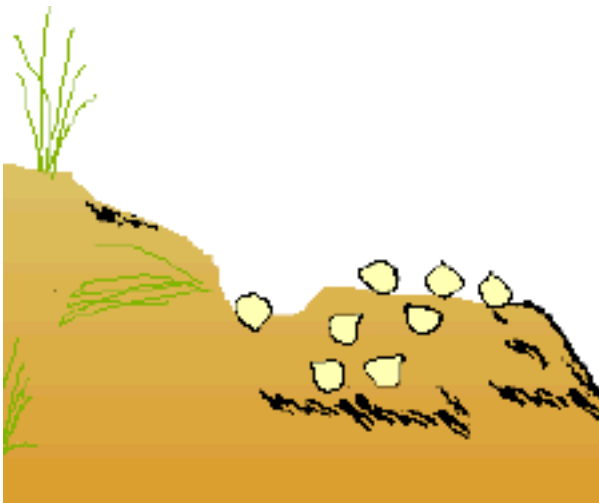


japu-japu

ja

ji

ju



janmarda

# K k



kartaku



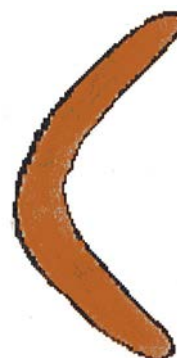
kilyawu



kurlarda



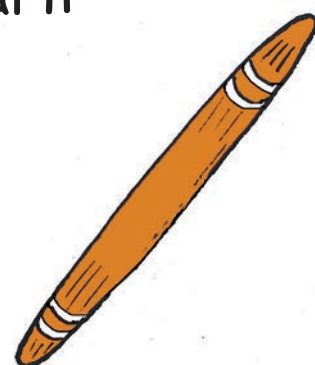
karnta



karli



kakalyalya



kuturu



kurdiji

# ka ki ku

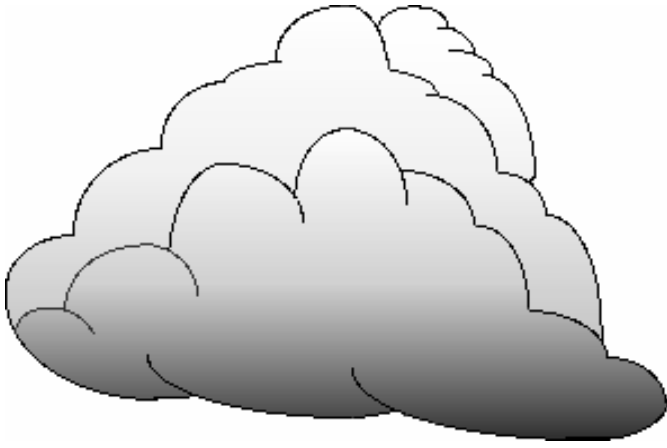


kirntangi

M m



mukarti



mangkurdu



milpa

4

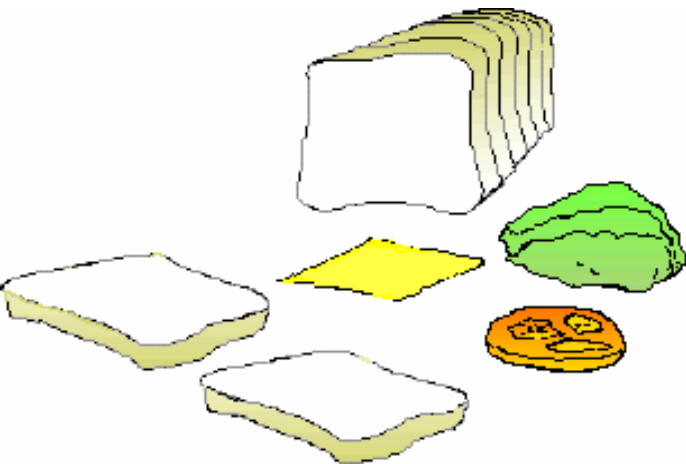
murntu



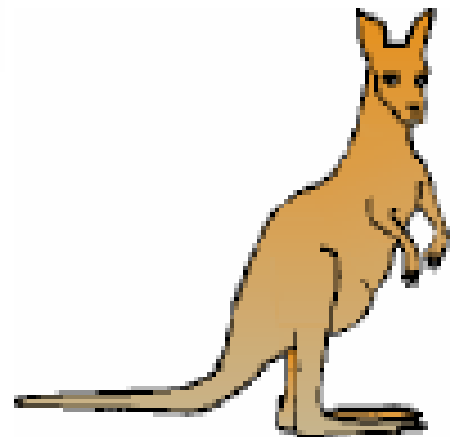
mirnirri



maliki

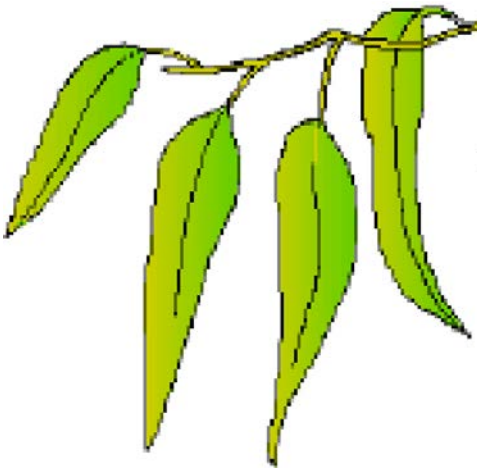


mangarri



marlu

ma mi mu

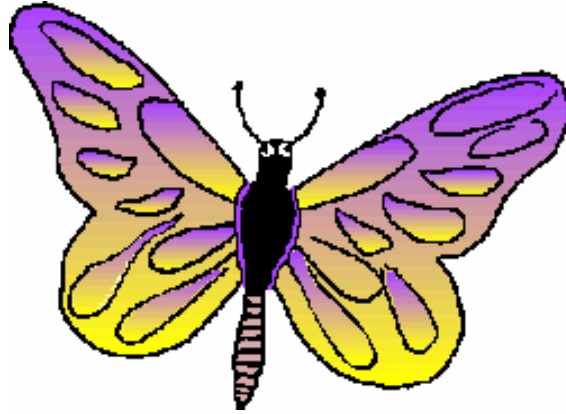


parla

P p



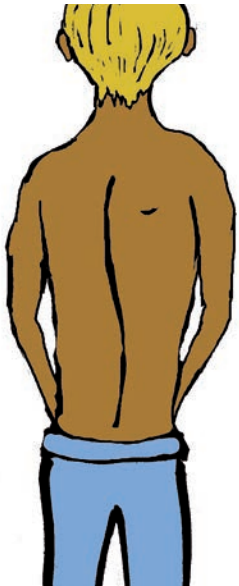
pirli



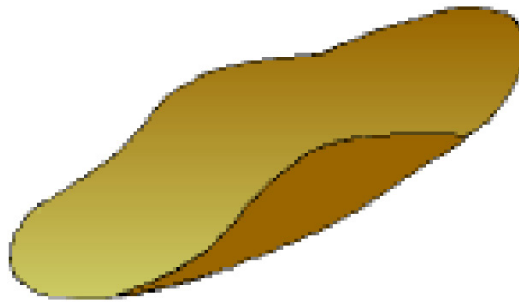
pinta-pinta



pingi



purturlu



parraja

pa

pi



puluku



pikirri

pu

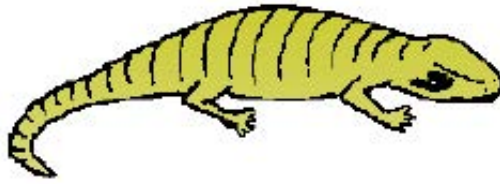


lapaji

LI



luurnpa



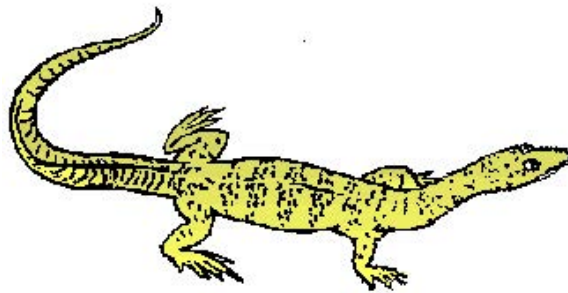
lungkarda



lutu

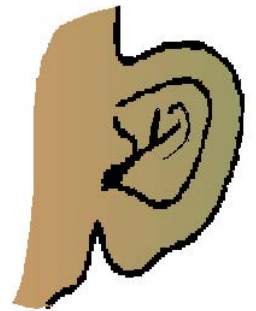


lingka



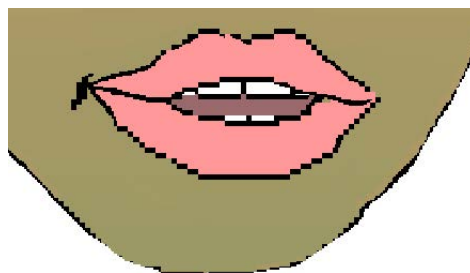
luwajirri

la



langa

li



lirra

lu



N n



nuwiyinki



niji



nalija



nama



nini



narnngu

na

ni

nu



nungarrayi



nantuwu

# Ng ng



ngatijirri



ngapilkiri



ngapa



ngipiri



ngurra

nga

ngi

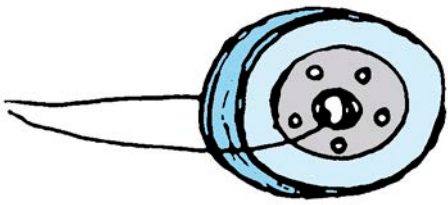


ngiji



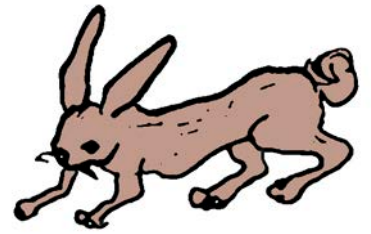
ngami

ngu



rimi

R r



rapiti



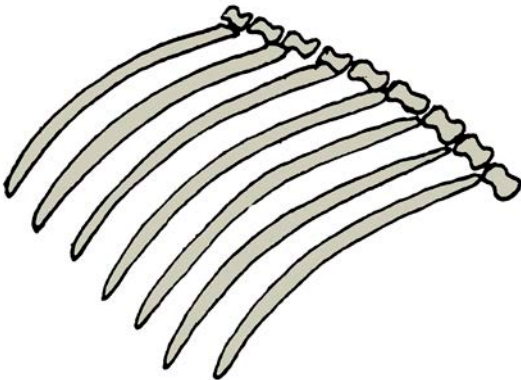
rampaku



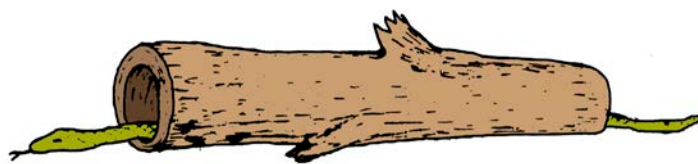
rilyi



rinpi-rinpi



ramarra



rurupa

ra

ri



ruutu

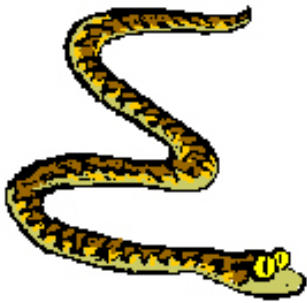
ru



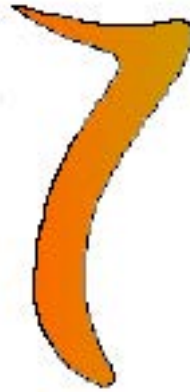
W w



wanta



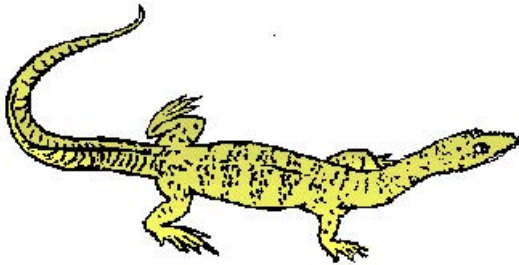
warna



wirlki



wirliya

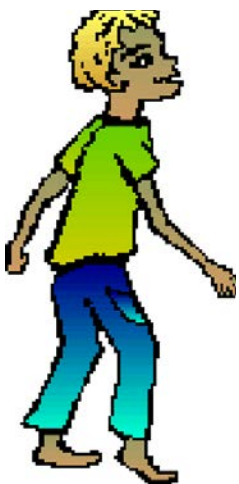


wardapi



warlu

wa



wirriya



warlkurru

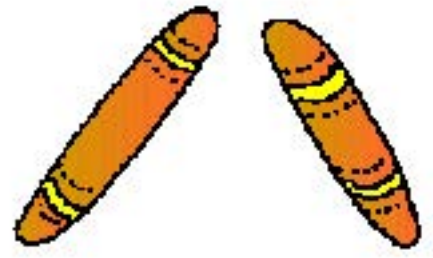
wi



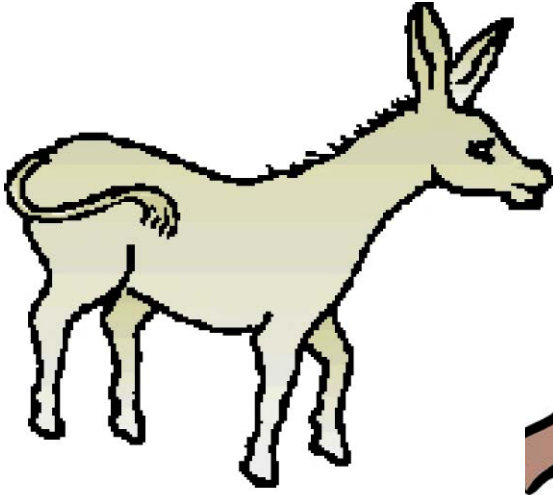
wurrumpuru

wu

T t



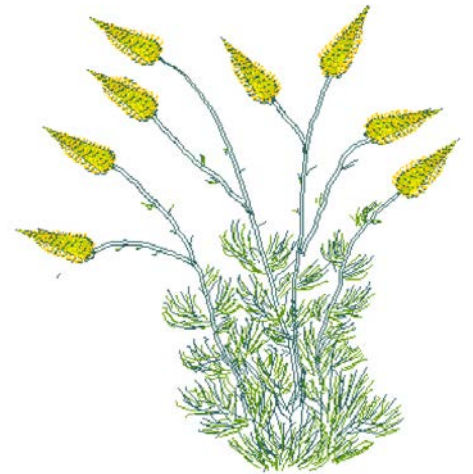
tururru



tangkiyi



turlkami



tipa



taya



tiyi



turnu



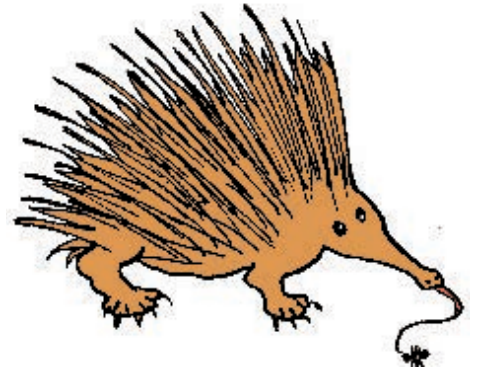
tari

ta ti tu

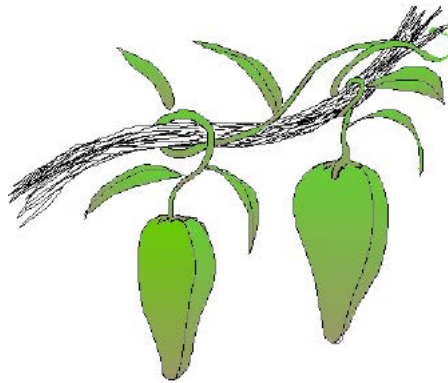


yarla

Y y



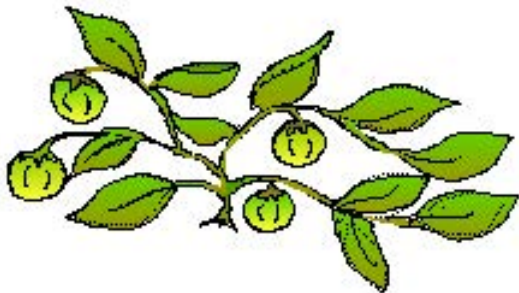
yinarlingi



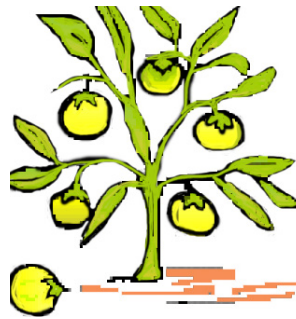
yuparli



yinarrki

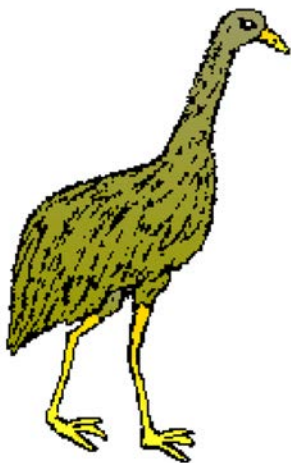


yipirntiri



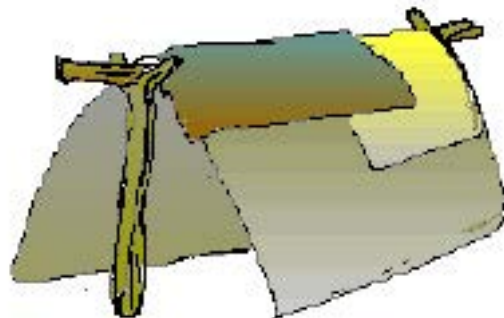
yakajirri

ya



yankirri

yi



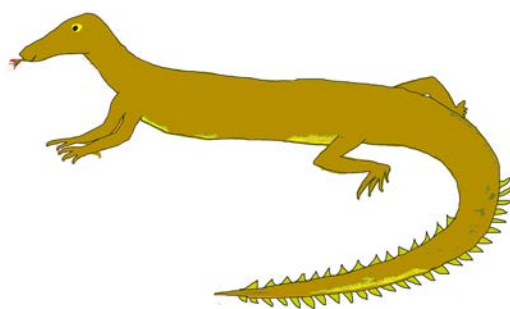
yujuku

yu





Ny ny



nyinjirri



nyalali



nyalurti



nyunjirni



nyinami



nyuurl-pinyi

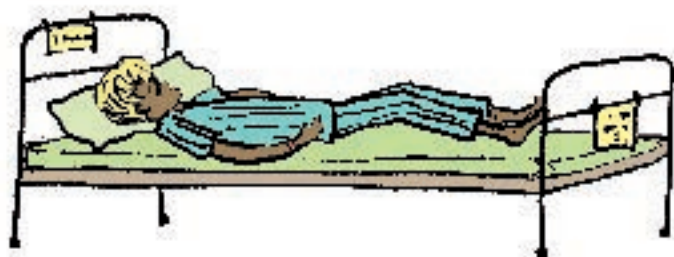


nyanyi ka

nya

nyi

nyu



nyurnu

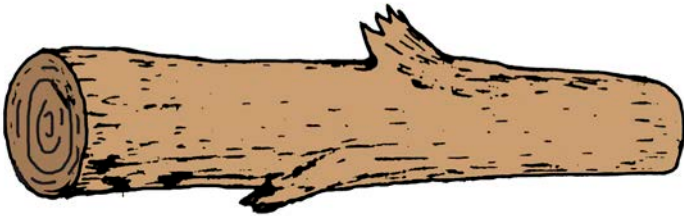
# Rd rd



rduku-rduku

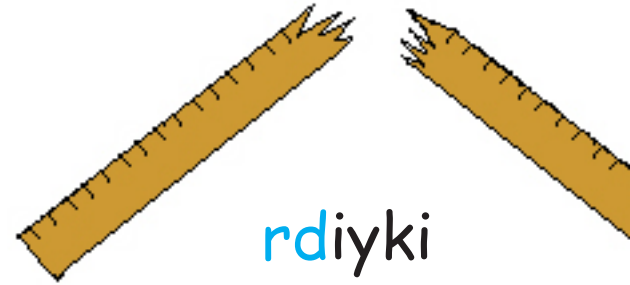


rdingki



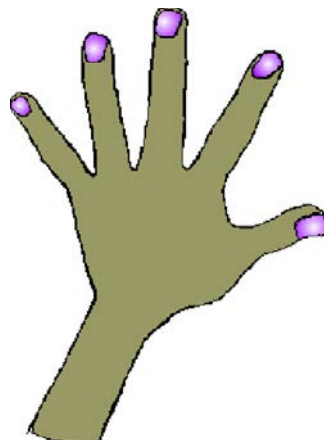
rdalyku

rda



rdiyki

rdi



rdaka

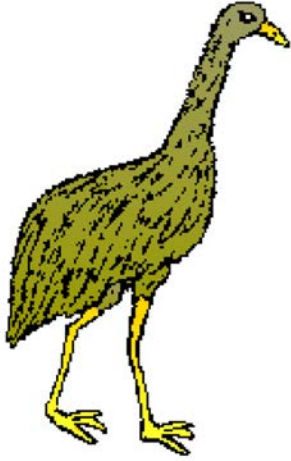
rdu

rr

rra

rri

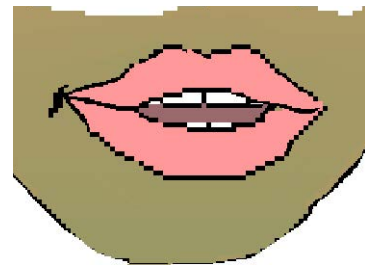
rru



yankirri



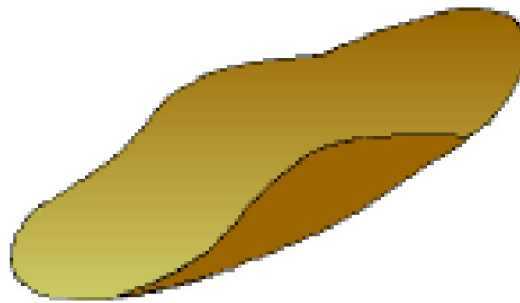
jurru



lirra



wirriya



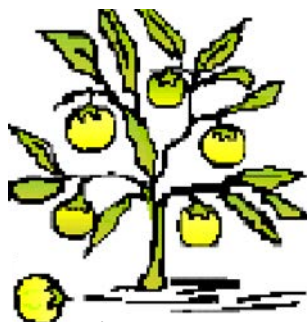
parraja



warlkurru

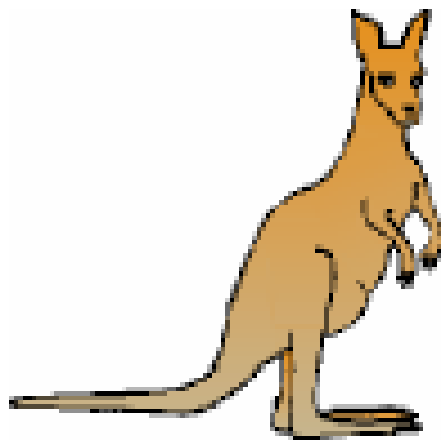


yinarriki



yakajirri

rl



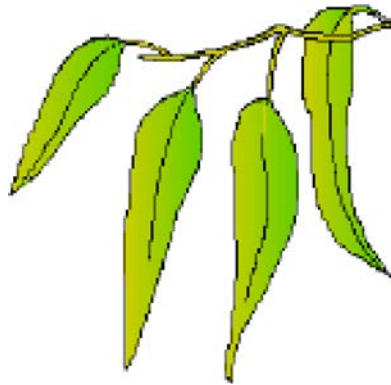
marlu

rla



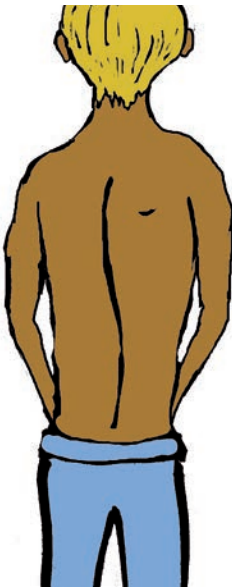
wirliya

rli



parla

rlu



purturlu



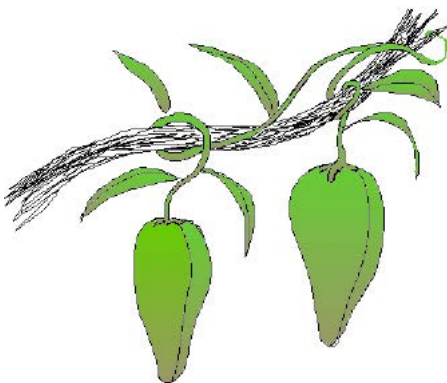
warlu



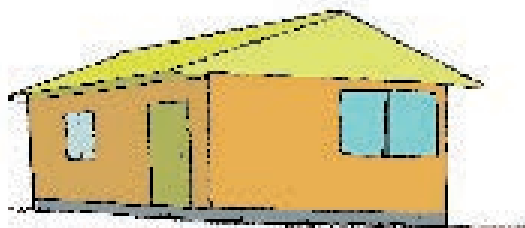
kurlarda



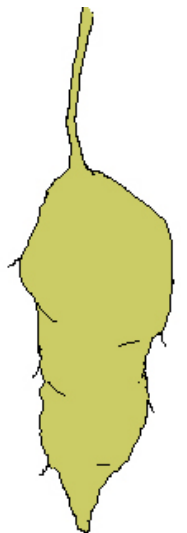
pirli



yuparli



yuwarli



yarla



rn



mirnirri



warna



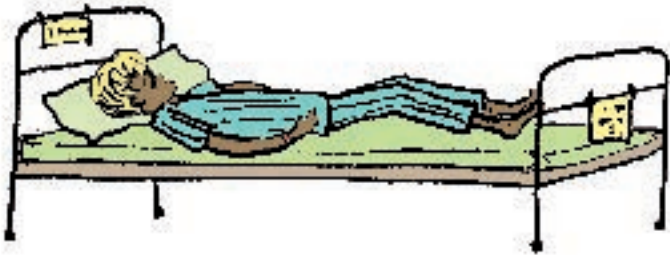
mukarni



karnarri



marna



nyurnu



warnayarra

rna



ngarni

rni



turnu

rnu