

Nyarrparlu kanpa-nyanu purda-nyanyi



pukurlpukurlpa



mimayi kurliypa



wajampa



yarlparu



palti-palti



kulu-parnta



kurlinypa



wardinyi



lani-lani



muurlpa-wangu



kurnta



jukuru



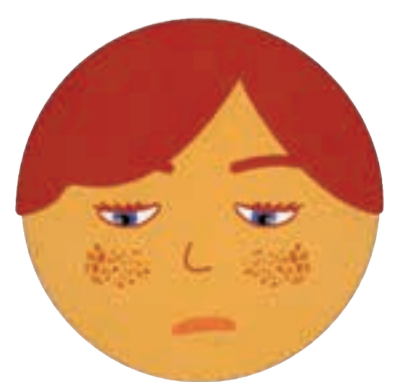
jumati



murru-murru



ngarrurda



yirraru